

## ISLA® WEB MALWARE ISOLATION SYSTEM

Isla is a unique tightly integrated solution that merges the power of today's advanced processing hardware with advanced hypervisor technology to contain and isolate all potential malware with multiple layers of protection. Isla is only way to eliminate all web-borne malware attacking the enterprise from entering the network.

# Datasheet



### Benefits

#### Protection That Works

Advanced network isolation technology keeps malware from entering the network.

#### Defeats Costly Attacks

Web, Email, Documents, and Cloud Collaboration systems are all protected by Isla

#### Covers All Endpoints

Isla protects all corporate endpoints, Mac, Windows, and Linux.

#### Easy to Use

Isla protects existing browsers without impacting performance, functionality, or usability.

#### Easy to Deploy

Isla is a network solution that doesn't require an endpoint agent to deliver protection.

#### Easy to Manage

Isolation policies are simple to create and manage and don't produce false positives

### The Enterprise Malware Problem

The web is the #1 vector for attackers to deliver advanced, undetectable malware to an organizations' endpoint devices. Most successful attacks use the browser, web-mail, or malicious web mail attachments or cloud services to breach the traditional detection based defenses used in the past.

The increasing number of successful attacks and breaches over the last few years clearly demonstrates that malware detection is no longer a viable strategy and that a new approach is needed.

### Why Isla?

The only way to eliminate all web-borne malware from the enterprise is to shift the focus from malware detection – which can never be 100% accurate - to malware isolation - which prevents all web content from entering the network. Malware isolation is not a new concept, many attempts have been made in the past to implement a barrier between unknown code and a vulnerable system. So why does Isla succeed where so many other products have failed?

Isla is a network based solution that is deployed in the DMZ outside the firewall. Isla supports all enterprise endpoints and delivers the following benefits:

- Security – Isla uses patent-pending technology which provides layered protection and deep isolation ensuring no web code escapes containment.
- Performance –Isla uses the proprietary "Air-Gap" protocol which uses AI to dynamically deliver a seamless and transparent user experience.
- Scalability – The Isla architecture makes it easy to expand the solution, add users, and rapidly scale capacity based on the needs of the organization.

#### Content Isolation Process Isolation

Proprietary hardened rendering engine  
Hardened SE Linux execution kernel

#### Session Isolation Appliance Isolation

Based on the KVM secure hypervisor  
Leverages physical memory isolation  
Hardened SE Linux appliance

#### Connection Isolation

Secure encrypted pixel transport protocol

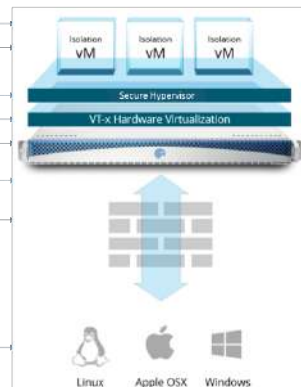
#### Physical Isolation

Isolates malware outside the network

Quick time to value

Defeats ALL web malware with isolation in depth

Complete enterprise client coverage



Only Isla delivers this level of scalability and isolation across the entire range of enterprise systems while supporting the rich content and interactivity that today's web sites and cloud based applications demand.

**Isla Specifications**

**Isla Zero Client**

Google Chrome v49 and above  
Internet Explorer 11

**Isla viewer for Windows**

32-bit and 64-bit Windows  
XP/Vista/7/8/10: Intel 500 MHz  
Pentium class processor or better  
30MB of available disk storage;  
50MB of available memory

**Isla Viewer for Mac**

MAC OS X 10.7 or higher: Intel  
Core Duo class processor or  
better 30MB of available disk  
storage; 250MB memory

**Isla Viewer for Linux**

Check with Sales representative  
for specific Linux versions  
supported 30MB of available  
disk storage; 250MB of available  
memory

**Appliance Models**

**SAS-530**

50 concurrent sessions (typical)  
Chassis Form Factor: 1U, rack mount  
Chassis Dimensions: 1.75" x 16.93"  
x 27.95"  
Chassis Weight: 40 lbs (18.4kg)

**SAS-1030**

100 concurrent sessions (typical)  
Chassis Form Factor: 1U, rack mount  
Chassis Dimensions 1.75" x 16.93" x  
27.95"  
Chassis Weight: 40 lbs (18.4kg)

**SAS-2030**

200 concurrent sessions (typical)  
Chassis Form Factor: 2U, rack mount  
Chassis Dimensions: 3.47" x 17.25" x  
28.50  
Chassis Weight: 85 lbs (38.6kg)

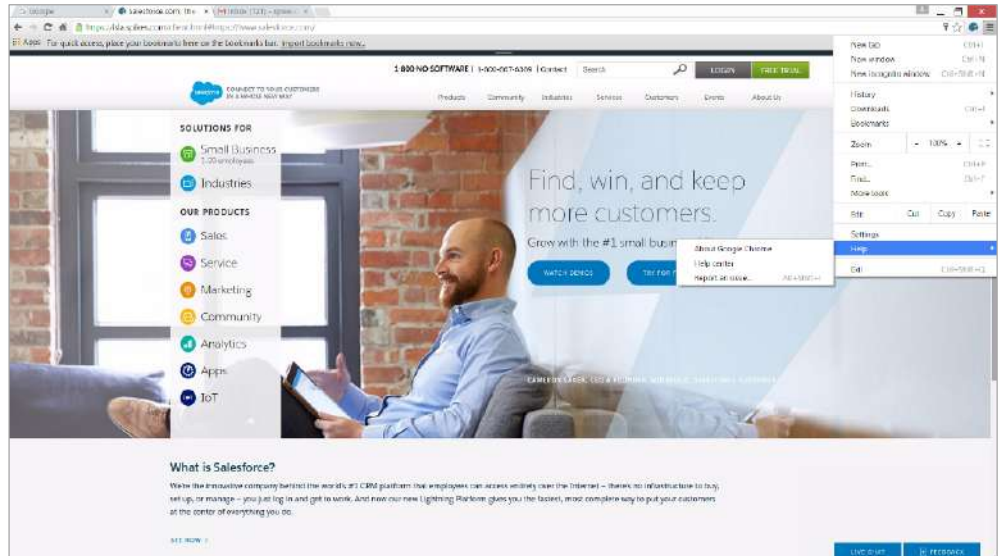
**SAS-4030**

400 concurrent sessions (typical)  
Chassis Form Factor: 2U, rack mount  
Chassis Dimensions: 3.47" x 17.25"  
x 28.50  
Chassis Weight: 85 lbs (38.6kg)

**Isla Clients**

**Zero Client**

Zero Client is a transparent, state of the art HTML5 based client which transforms your standard web browser into an impenetrable security tool with minimal impact on the user or the security team. Zero Client is "pushed" into the browser automatically when the user navigates to an external web site.



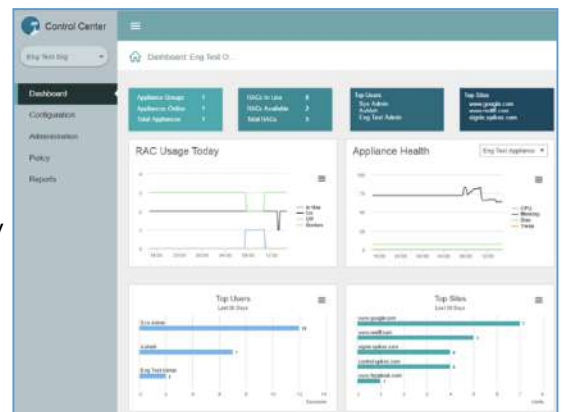
Isla Zero Client Protects Your Existing Web Browser

**Enterprise Viewer Agent**

Enterprise Viewer is an optional, secure, light weight agent that installs on the protected endpoint in place of a traditional web browser. Isla Viewer provides the security team with positive control of the users' web browsing experience.

**Isla Control Center**

The Isla Control Center delivers centralized management and control of the Isla solution. Control Center was designed with an advanced multi-tenant, multi-role architecture for highly distributed on premise or cloud based environments. Control Center is available as a soft appliance or a hardware based appliance.



Control Centers' key administrator tools include the following:

- Policy Management – Granular configuration of the end user environment
- Single pane of glass – All enterprise controls are in one place, with reporting that helps guide policy decisions for customers that require more granular controls. Configuration and health alerts are also controlled centrally.

For more information, please contact your HPE representative today or email [info@cyberinc.com](mailto:info@cyberinc.com)

